

# Urban Street Series

LED STREET LUMINAIRE



# Urban Street



PATHWAYS



STREETS, PATHS AND CYCLE PATHS

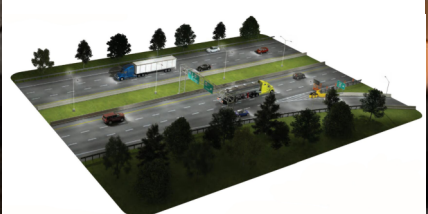
RESIDENTIAL ROADS



RESIDENTIAL ZONES

SHARED ZONES,  
COMMERCIAL STREETS

HIGH SPEED STREET



CITY ZONE

MAIN ROAD





The 'Urban Street' range has a variety of options which have been developed specifically for street lighting environments. The system offers exceptional optical performance, thermal management flexibility and efficiency.



# Urban Street







## Innovation and efficiency

The new 'Urban Street' range is a family of luminaires developed to deliver an innovative and modern lighting system for a range of street lighting applications.



The product design process focuses on making the most efficient and reliable technology a reality. This aspiration has resulted in developments with a lasting impact. In other words, our work ensures that we are delivering the latest technologies with class leading quality. With the introduction of the new range of luminaires we are continuing this trend. Low profile styling, adaptable mounting design and customized optics that allow for maximum column spacing, lighting and uniformity.

### Optics / light source

Available with a variety of optical packages

- > Lumen packages ranging from  
3,000 to 19,000 lumens  
2700K to 6500K colour temperature  
80 000 hours life
- > +/- 15° tilting

### Approvals

IP 66 light engines (BS EN (IEC) 60598-1)  
IP 66 gear compartment  
(BS EN (IEC) 60598-1)  
IEC 60598-2-3  
-30°C to +40°C  
IK08 (EN 62262)



Lumen range: 3,000 to 19,000  
Power Consumption: 30W to 150W  
Lifetime: 80,000 hours  
Colour Temperature: 2700K or 6500K  
CRI: 70  
Optical IP Rating: IP66  
Housing IP Rating: IP66  
Impact Resistant: IK08

Electrical Class: Class I or II

Material:  
Body: High pressure die-cast aluminium  
Adapter: High pressure die-cast aluminium  
Optic: Tempered glass lens

Mounting:  
Post Top 40/50/60mm Side Entry

Tilting: +/- 15° tilt.

## Features and benefits

### Installation/Maintenance

Convenient luminaire access from the top, via captive screw.  
The LED light engine is separate from the driver, which encourages heat dissipation by way of conduction.



#### Circuit breaker - Optional

Ensure the safety during installation and maintenance

#### Accessibility

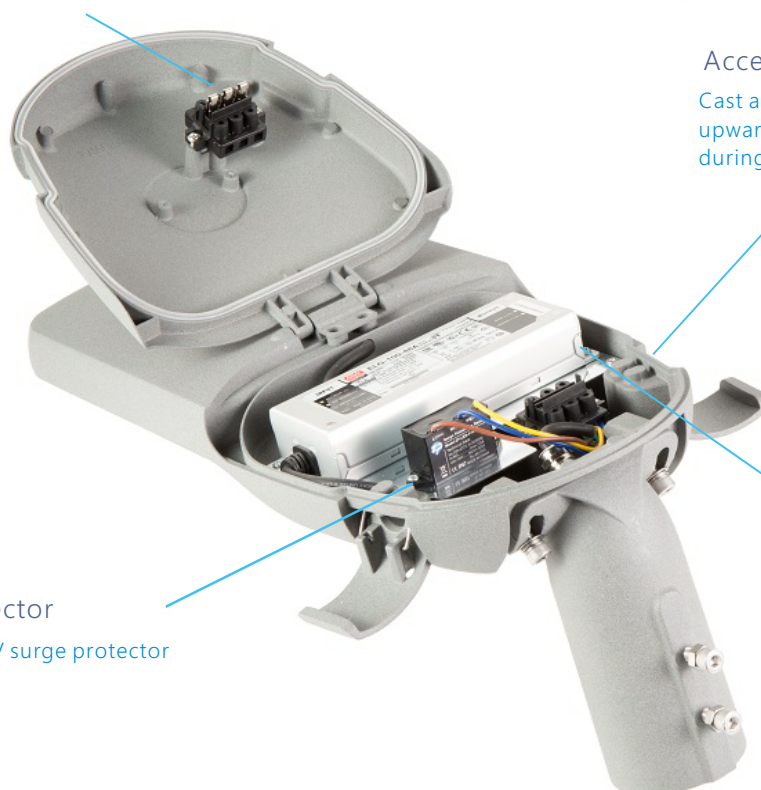
Cast aluminum cover hinging upwards to allow ease of access during installation and maintenance.

#### LED Driver

Thermally managed LED drivers with a range of control

#### Surge Protector

10KV and 20KV surge protector optional



## Technical specifications

### Enclosure - IP66

In accordance with BS EN 60598-1, IP66 luminaire enclosure has been achieved. A series of bespoke seals designed for the luminaire ensure that the IP66 seal is maintained.

### Impact rating - IK08

In accordance with EN 62262, IK08 impact protection rating has been achieved. Maximum protection to ensure the projected life of the luminaire is maintained. The IK08 rating is achieved via the thick tempered glass lens.

### Mounting Arrangements

Suitable for post top (67mm) and side entry (60mm/50mm) mounting arrangements.



### Electrical class

Available in CI and CII.



### Overvoltage surge protector

Can be specified to include an overvoltage protection system, that protects the electronic parts of the luminaire against overvoltage of up to 20KV/KA,



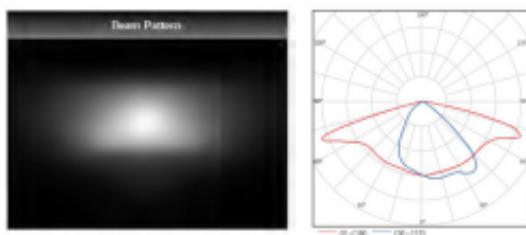
## Technical Information

Model No	SFLEDSTHPURBMI - (Mini)		SFLEDSTHPURBS - (S)		SFLEDSTHPURBM - (M)		SFLEDSTHPURBL - (L)	
Size	530*200*120mm		608*234*122mm		673*260*122mm		794*320*122mm	
Holder	48mm		48mm or 60mm		60mm		60mm or 76mm	
Watts	40W	60W	80W	100W	120W	150W	180W	200W
Luminous	5000-5200	7800 - 8400lm	10400 - 11200lm	13000 - 14000lm	15600 - 16800lm	19500 - 21000lm	23400 - 25200lm	26000 - 28000lm
LED Qty	72pcs Smd3030	72pcs SMD3030	144pcs SMD3030	144pcs SMD3030	192pcs SMD3030	192pcs SMD3030	240pcs SMD3030	240pcs SMD3030
Material	Aluminum, LED Chip, Lens, Toughened Glass, Screw 3000K,							
Kelvin	4000K, 5000K, 5700K, 6500K or Specified Color							
LED option	SMD3030, SMD5050, CREE (Note: normal are SMD3030 chip)							
CRI	90Ra, 80Ra, 75Ra, 70Ra							
Lens Angle	Use 16 in 1 type lens, offer Type I, Type II, Type III, Type V option (Note: normal are Type III)							
Driver option	Sosen, Inventronics, Meanwell							
Input Voltage	90-277Vac (Sosen), 110-240Vac (Meanwell ELG), 90-305Vac (Meanwell HLG); 50/60Hz; PF>0.93							
Lifetime	80, 000 - 100, 000 hours							
IP Level	IP66							
Options	AC Normal Lighting, AC Dimming Lighting, Solar Lighting, Photocell							
Certification	IEC60598-2-3 / 60598-1, IP66, IK08							
Package	URBMI-Mini 30-60W		URBS-S 40-100W		URBM-M 100-150W		URBL-L 150-200W	
			66.5*27.5*15.5 cm/1pc 0.031cbm Empty Housing: Finish Lamp:		72.5*30*15.5 cm/1pc 0.036cbm Empty Housing: Finish Lamp:			

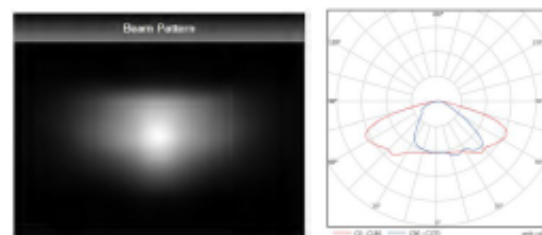


Light Distribution Options

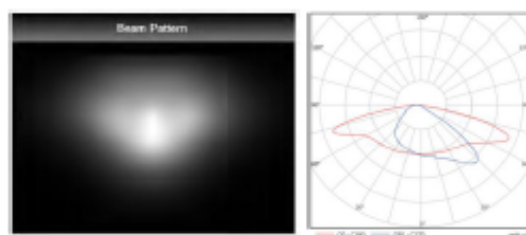
Type I



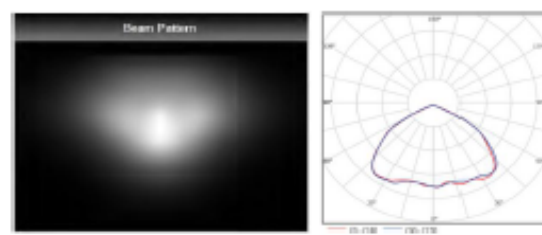
Type II



Type III



Type V





# Technical specifications

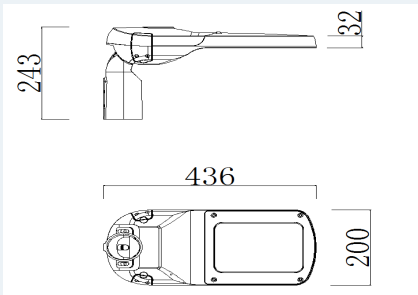
## Weight

Small	4.5kg
Medium	6kg
Large	8kg

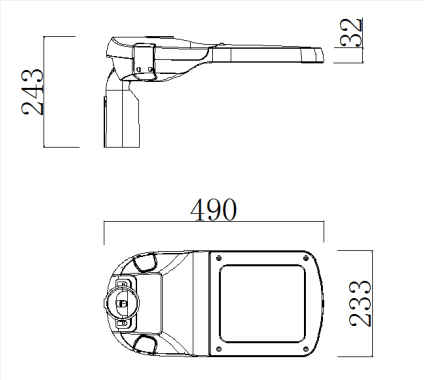
## Ta

-30°C to 40°C
---------------

Small



Medium



Large

